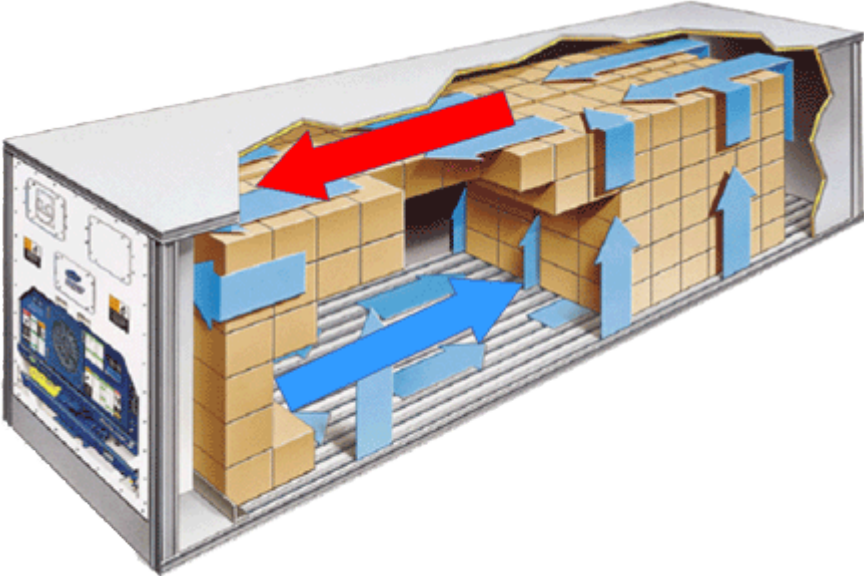
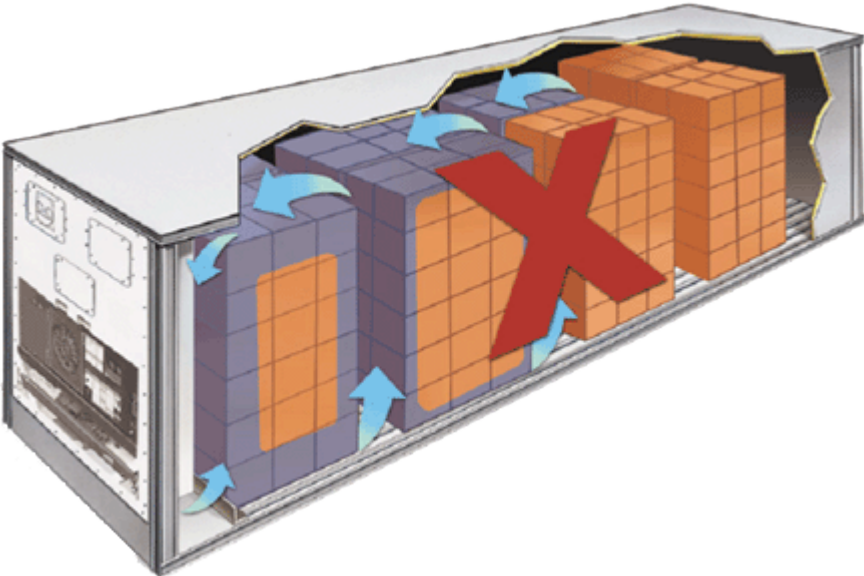


# Reefer Cargo Handling

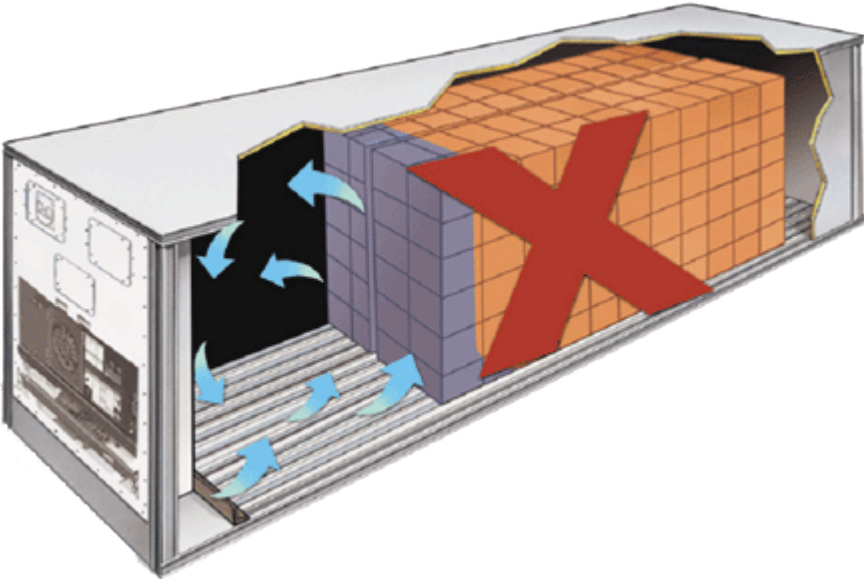
Proper cargo loading AND airflow



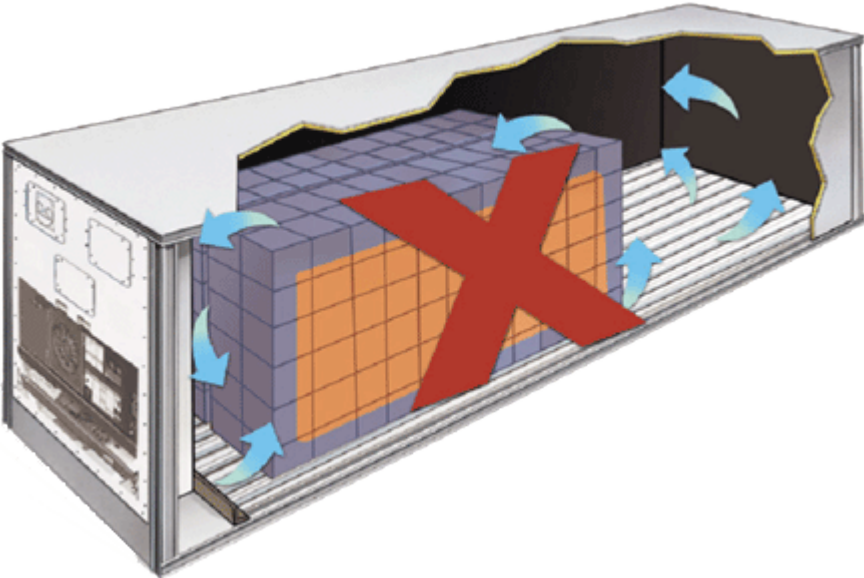
Excessive SPACE BETWEEN load. Result: Airflow doesn't extend the FULL LENGTH OF the container



Load placed IN the rear OF the container. Result: Short cycling



Load placed IN the front OF the container. Result: Air IS NOT forced through the interior OF the load



Different Boxes FOR Different Products

